

FRONT ELEVATION
NOT TO SCALE

SPECIFICATIONS

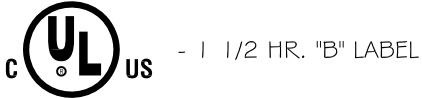
- 16 GAUGE COLD ROLLED STEEL FRAME
- 20 GAUGE COLD ROLLED STEEL DOOR
- 2" THICK FIRE RATED INSULATION
- 1" WIDE EXPOSED FLANGE
- GRAY BAKED ON POWDER COAT FINISH
- FLUSH CONTINUOUS PIANO HINGE
- SPRING DOOR CLOSURE
- FRAMES PROVIDED WITH .25" MOUNTING HOLES
- FLUSH KEY / METAL KNURLED KNOB OPERATED LOCK
- INTERIOR RELEASE MECHANISM

OPTIONS

- GALVANIZED BONDERIZED STEEL
- STAINLESS STEEL WITH #4 SATIN POLISH FINISH
- STAINLESS STEEL CONTINUOUS PIANO HINGE WITH STAINLESS STEEL PIN (AVAILABLE ON SST PANELS ONLY)
- CONCEALED PIN HINGE
- PREPARATION FOR 1.125" MORTISE CYLINDER (CYLINDER PROVIDED BY OTHERS OR BY FACTORY)

LISTINGS

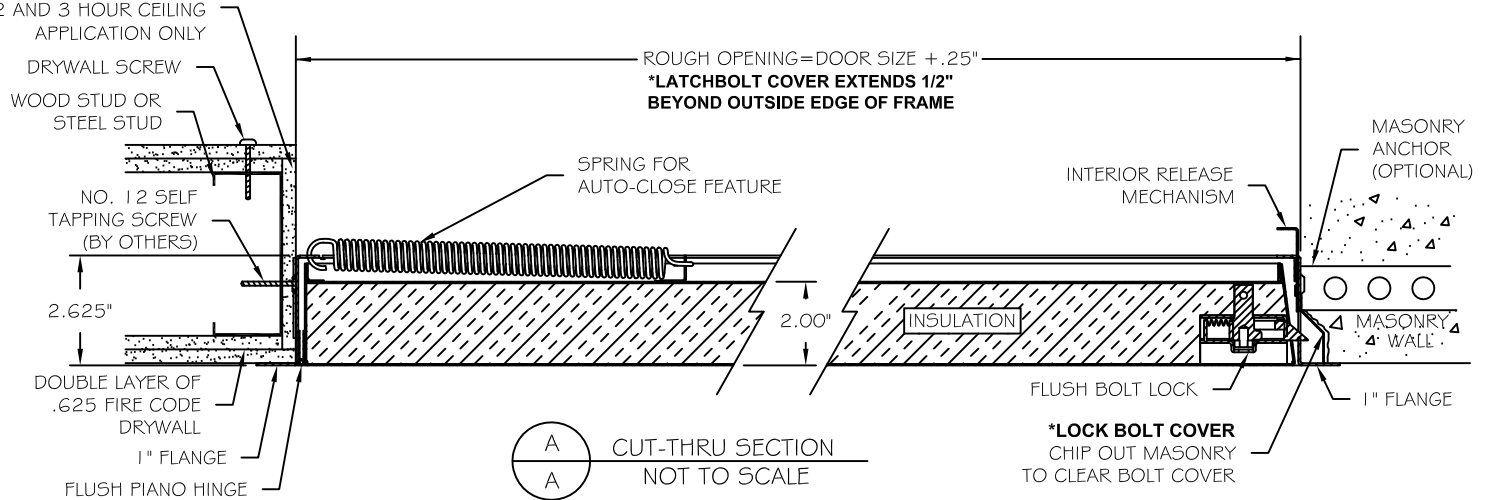
VERTICAL APPLICATIONS



HORIZONTAL APPLICATIONS



**WRAPPING OF STUD REQ'D
IN 2 AND 3 HOUR CEILING
APPLICATION ONLY



ALL PURPOSE FIRE RATED ACCESS PANEL

Standard Features:

Door:	20 gauge (.912 mm thick) cold rolled steel
Frame:	16 gauge (1.52 mm thick) cold rolled steel with 1" flange
Hinge:	Flush continuous piano hinge
Latch:	Knurled knob/key operated latch bolt Optional: mortise cylinder preparation (cylinder provided by factory or others)
Finish:	Gray baked on powder coat Optional: galvanized bonderized steel or stainless steel with #4 satin polish finish
Insulation:	2" thickness fire rated mineral fiber

Specifications:

Frame shall be 16 gauge cold rolled steel with 1" flange. Door shall be fabricated from 20 gauge cold rolled steel, insulated sandwich type construction. Door shall be self-latching with automatic closer and interior latch release mechanism. Hinge shall be flush continuous piano type. Latch(es) shall be a knurled knob/key operated latch bolt (optional: preparation to receive 1-1/8" mortise cylinder – cylinder provided by factory or others). This assembly shall carry a 1-1/2 hour U.L. "B" label for walls (250 degrees maximum temperature rise, 30 minutes) and carry a 3 hour Warnock Hersey label for ceilings rated 3 hours or less. Finish shall be gray baked on powder coat (optional: galvanized bonderized steel or stainless steel with #4 satin polish finish).

Installation shall be in accordance with manufacturer's instructions. Manufacturer shall guarantee against defects in material and workmanship for a period of one year.

Standard Sizes:

Std sizes (in)	Std Sizes (mm)	Weight/Latches	Std Sizes (in)	Std Sizes (mm)	Weight/Latches
08x08	203x203	11/1	22x30	559x762	32/1
10x10	254x254	14/1	22x36	559x914	39/2
12x12	305x305	17/1	24x24	610x610	29/1
12x18	305x457	25/1	24x30	610x762	36/1
12x24	305x610	28/1	24x36	610x914	40/2
14x14	356x356	16/1	24x48*	610x1219	53/2
16x16	406x406	18/1	30x30*	762x762	49/1
18x18	457x457	20/1	32x32*	813x813	51/1
18x24	457x610	39/1	36x36*	914x914	58/2
20x30	508x762	30/1	36x48*	914x1219	79/2
22x22	559x559	27/1	48x48*	1219x1219	100/2

All units are hinged on the second dimension (height). Rough opening is door size plus ¼".

*Exceeds maximum size to carry a Warnock-Hersey label for ceilings.